

# DOCUMENTED PLANT CHROMOSOME NUMBERS 1966:1

CARL S. KEENER

*Department of Botany, The Pennsylvania State University,  
University Park*

Figures 1-6 are camera lucida drawings.

## RANUNCULACEAE

North American species of *Clematis* Section *Viorna* Subsection *Integri-  
foliae*.

CLEMATIS OCHROLEUCA Ait.<sup>a</sup> (Fig. 1)  $n = 8$ . Va., Mecklenberg Co.:  
*Keener 1771d* (NCSC).

CLEMATIS COACTILIS (Fernald) Keener<sup>b</sup> (*Clematis albicoma* var.  
*coactilis* Fernald). (Fig. 2)  $n = 8$ . Va., Botetourt Co.: Keener 1801c  
(NCSC).

CLEMATIS VITICAULIS Steele<sup>b</sup> (Fig. 3)  $n = 8$ . Va., Bath Co.: *Keener*  
*1797f* (NCSC).

CLEMATIS ALBICOMA Wherry.<sup>b</sup> (Fig. 4)  $n = 8$ . W. Va., Pendleton Co.:  
*Keener 1782d* (NCSC).

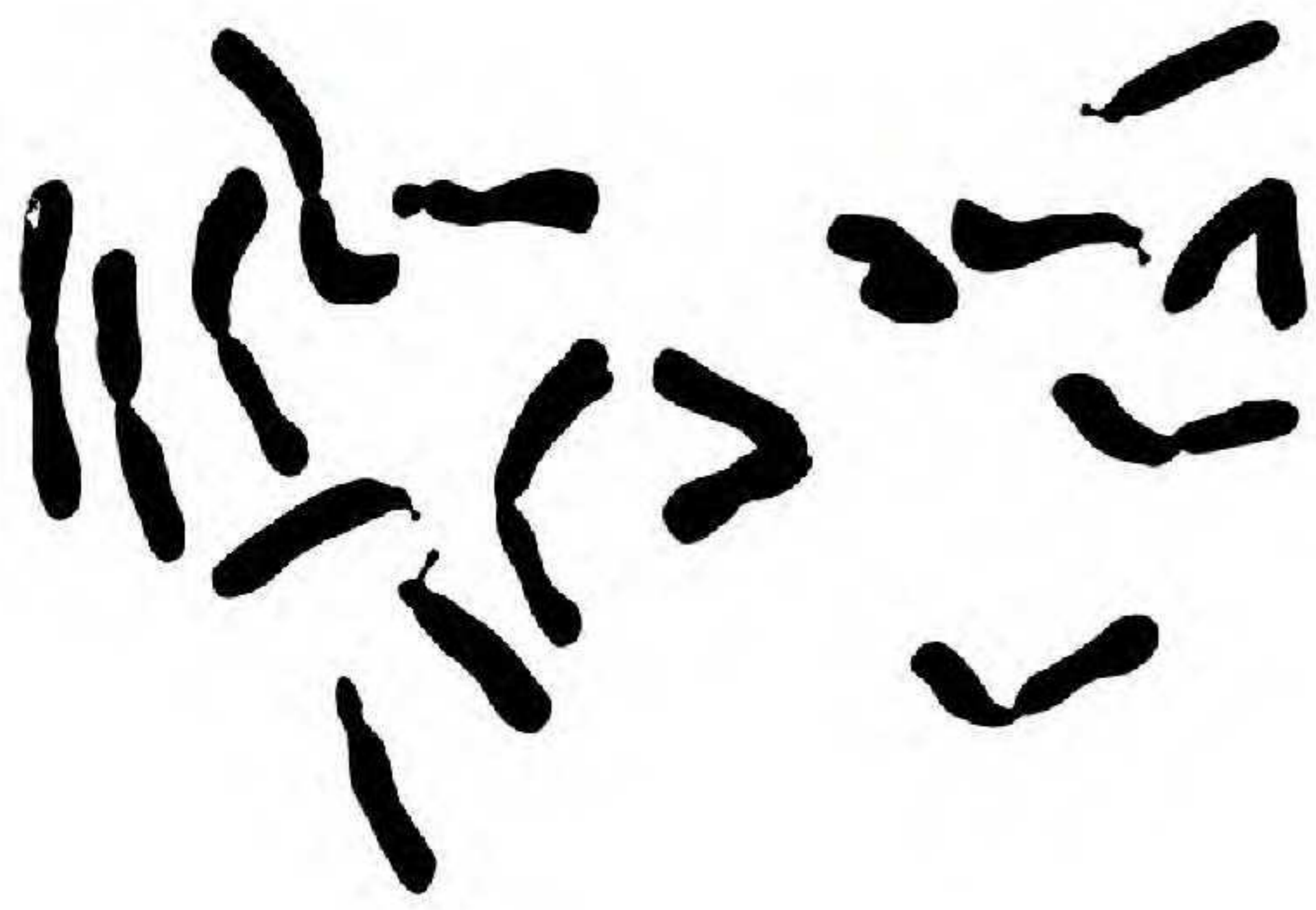
CLEMATIS FREMONTII Watson<sup>a</sup> (Missouri race = var. *riehlii* Erick-  
son). (Fig. 5)  $n = 8$ . Mo., Jefferson Co.: *Keener 1807i* (NCSC).

CLEMATIS FREMONTII Watson<sup>a</sup> (Kansas race = var. *fremontii*). (Fig.  
6)  $n = 8$ . Kans., Ellis Co.: *Keener 1810g* (NCSC).

<sup>a</sup> Species for which a similar chromosome count has been published previously.

<sup>b</sup> No chromosome numbers reported previously for this species.





1



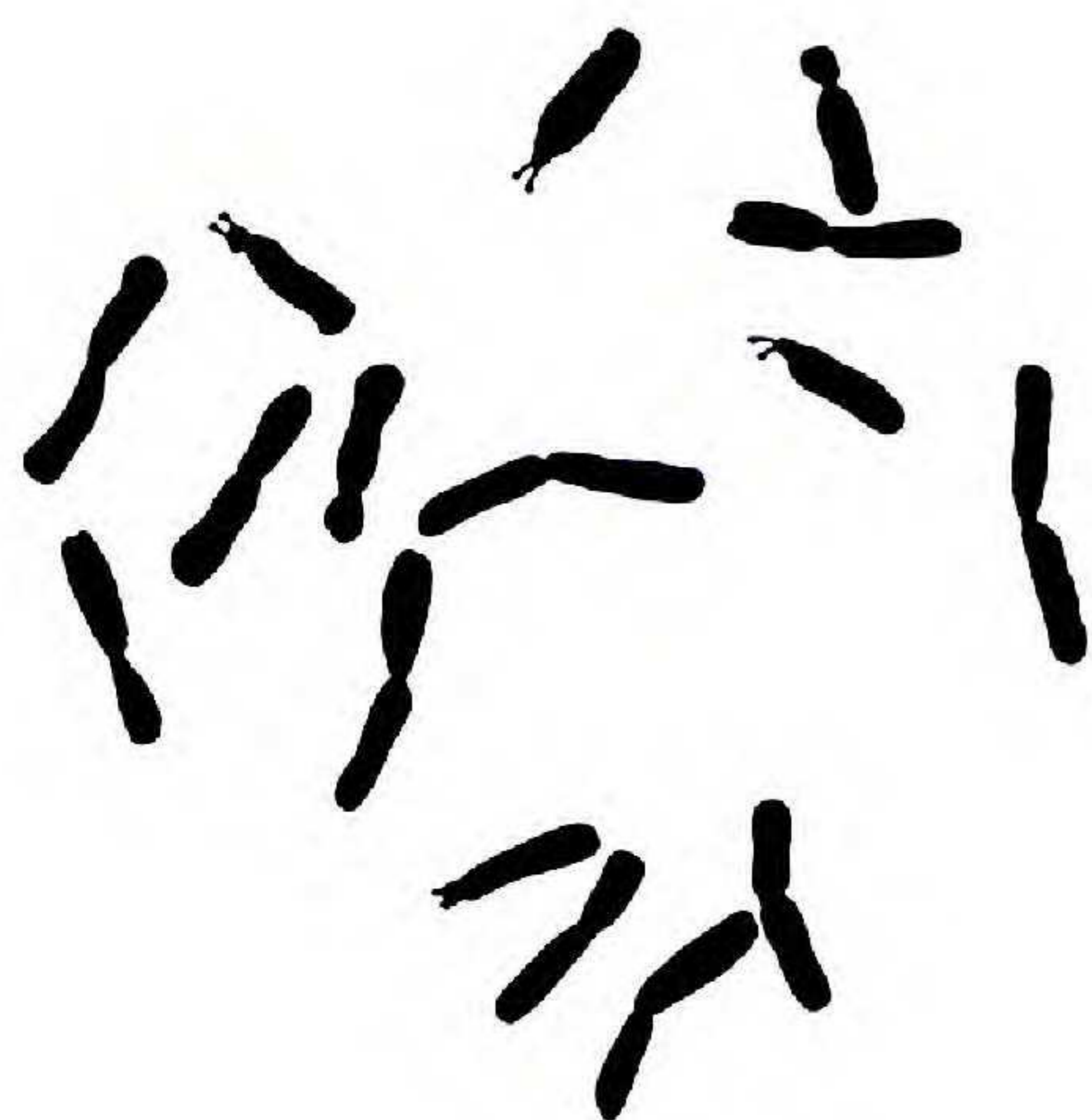
2



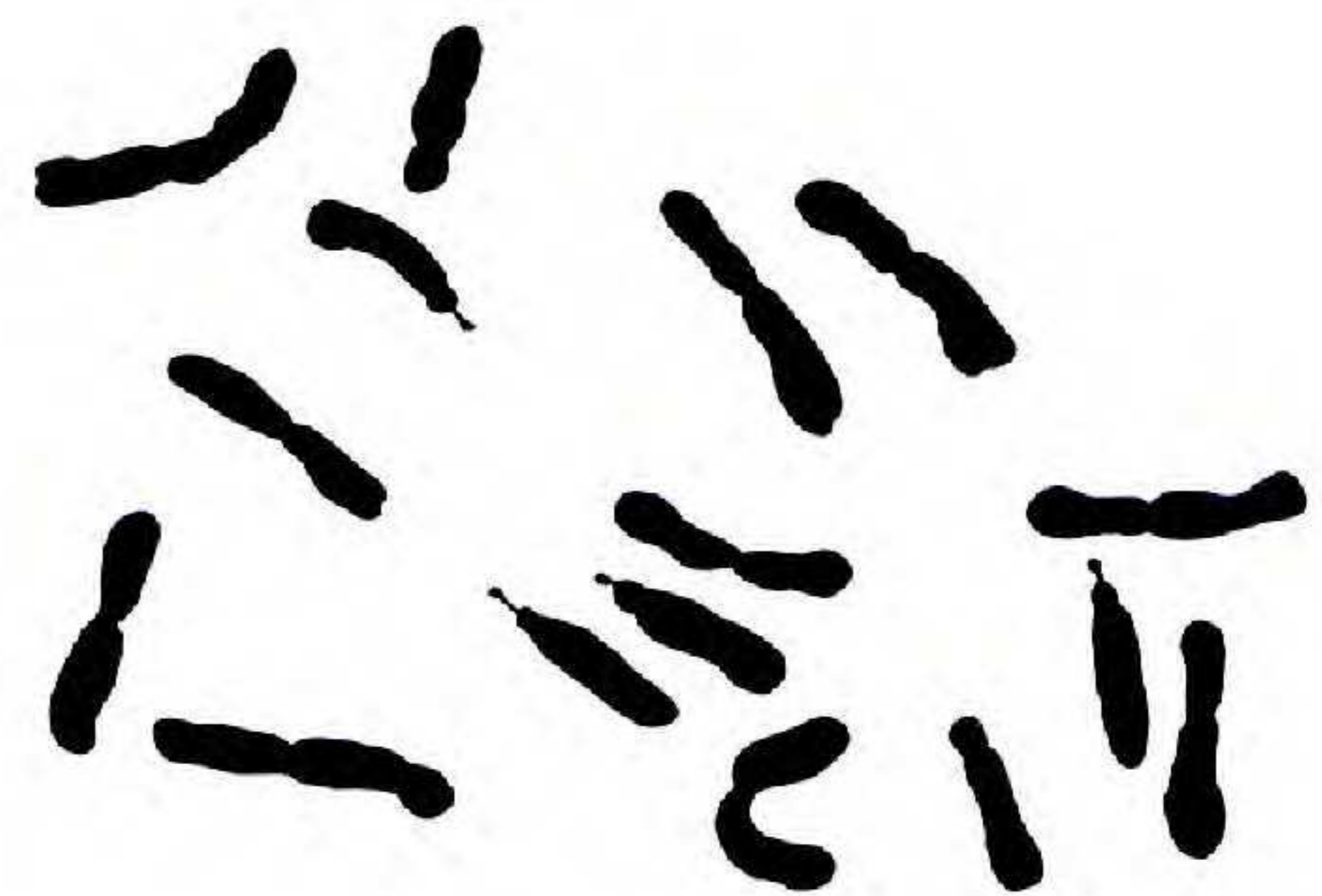
3



4



5



6

0.01 mm